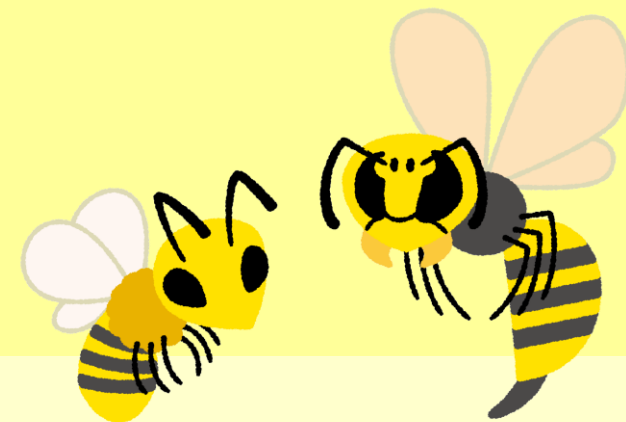
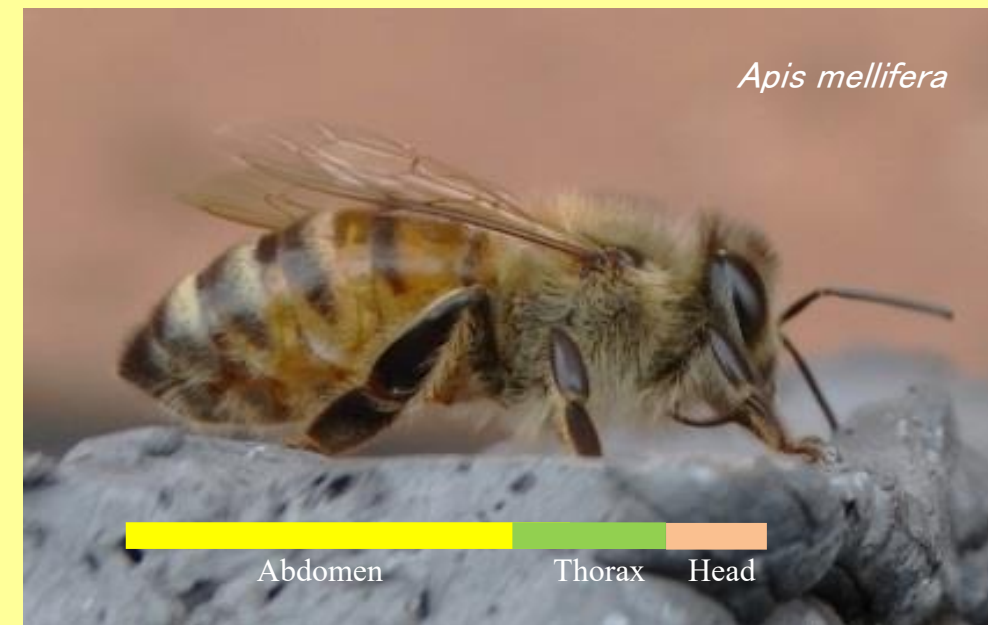


# Learn about bees and how to deal with them

Bees are often thought of as dangerous creatures, but there is no need to fear them if you understand their biology and behaviour. It is important to have the right knowledge and to get on well with them.

## What kind of insect is a bee?

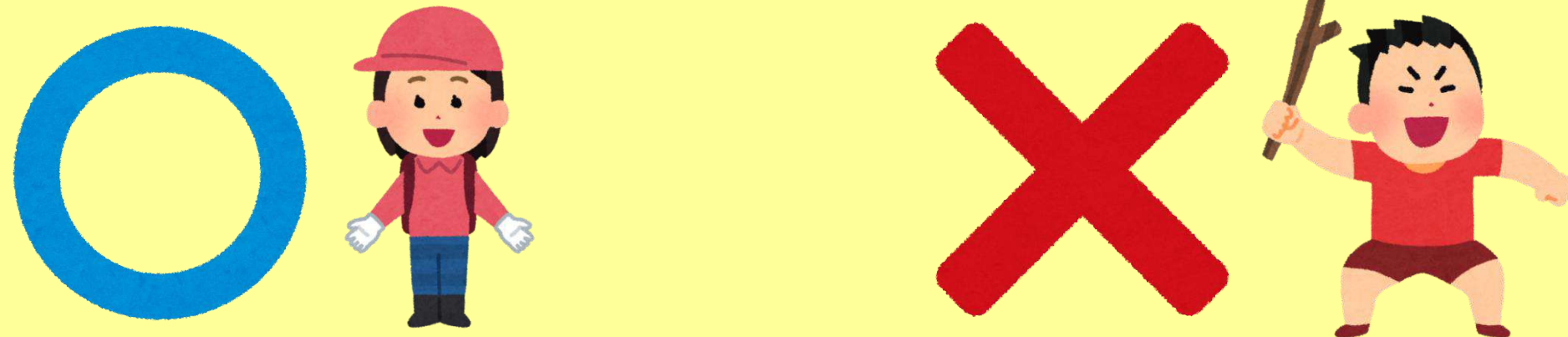
- Bees are a group of insects with about 130,000 species distributed worldwide. Ants and flies are also members of the same group as bees, the Hymenoptera.
- The body is divided into three parts - head, thorax and abdomen - and has two pairs of wings. Some species have poisonous stingers.
- Many bees, including honey bees, feed on nectar and pollen. They help pollinate plants and are important in agriculture.
- Carnivorous bees, such as wasps, prey on other insects to help control pests and maintain ecological balance.



# Where do bees sting?

Bees often sting black parts of the human body, such as the hands and arms where they move, the head and face where the sensory organs are concentrated, the eyes and head hair.

When working in nature, it is safer to wear a hat, long sleeves and long trousers and avoid exposing bare skin.

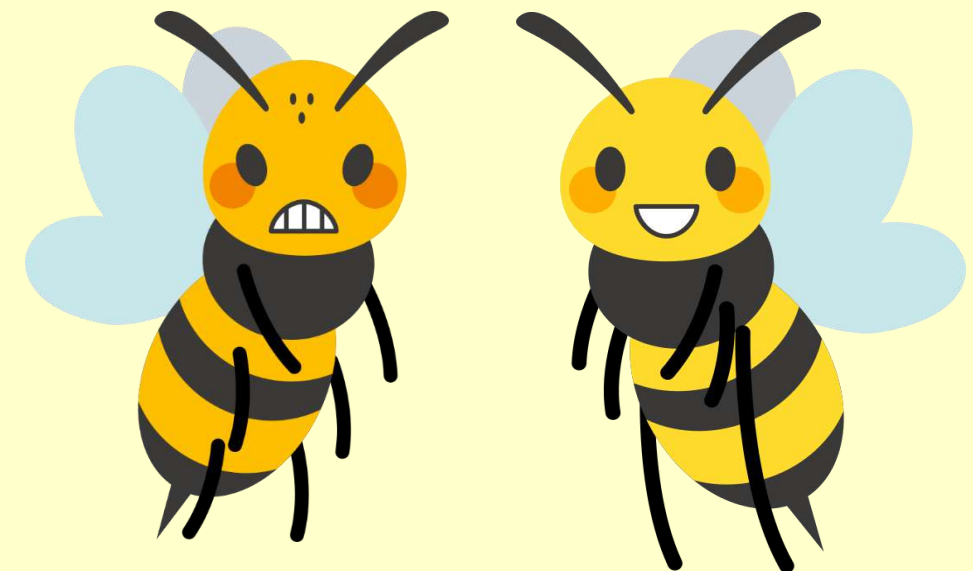


In order to prevent damage from wasps, Shinjuku Gyoen National Garden is working on safety management, including the installation of bee traps and the removal of nests.

If you notice anything in the garden, please inform the nearest staff or come to the Service Center.

# Tips to avoid bee stings

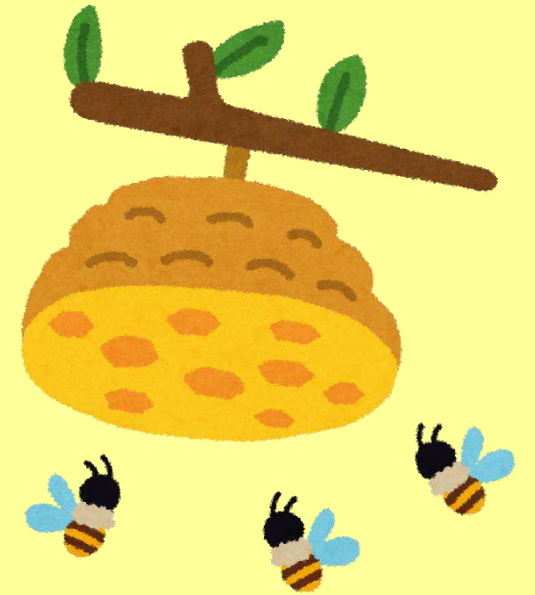
	Irritating bees 🙄	Does not irritate bees 🙌
Action	Approaching a bee hive or brushing a bee away with your hands can make them agitated and aggressive.	Slow or stationary movements cannot be discerned. Move away quietly.
Colour	Black	Bright colours such as white and yellow
Clothing	Furry or fluttering items	
Smell	Strong scents such as hairdressing products	



# Why do bees sting?

Queen bees build their nest and lay their eggs alone in spring and summer. Nests are at their largest in August and September, when the number of working bees increase.

The honey and larvae in the nest are targeted by other animals as a source of nourishment, so when people or animals approach to the nests, they attack to protect them. They may also use their stingers to defend themselves.



# Where do bees come to?

## ■ Trees and fruits

Bees are attracted to tree sap and ripe fruit.

Stay away from bee feeding areas.

## ■ Juice containers

They may burrow into juice containers.

Do not leave drinks unattended.

## ■ In clothes, shoes and luggage

They may burrow into your clothes,  
shoes or luggage as a resting place.

Check before you wear them.

